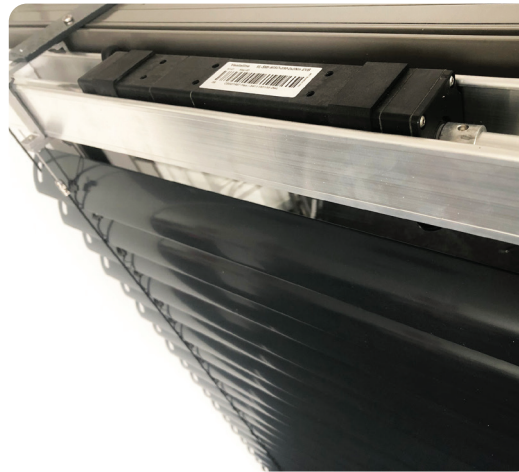


External Venetian Blinds

+ Digital Drive & Digital Controller

- Glare, protection and privacy
- Maintain outlook & natural airflow
- Highly efficient at heat reduction
- Design element to a facade
- Excellent energy performance



vasatec External Venetian Blind systems are very effective in stopping solar heat and UV light before reaching window surfaces. The electrical drive systems lower, raise and tilt slats to the desired angle, allowing as little or as much natural light and airflow as needed. The angular position of slats can maintain both views to the outside, whilst regulating interior conditions providing both visual comfort, and an energy efficient space. The systems are durable with heavy duty operating mechanisms and can automatically retract in high winds with the help from added weather sensors.

Motorised Control



Motorised External Venetian Blinds can be controlled at various levels of sophistication, from wall switch, remote control or BMS system integration. i.e. KNX, LON IoT connected blind control.

- KNX & BMS network integration
- Solar path timed control
- IoT digital motors
- Future proof software
- Fail Proof Installation

Digital Motor Features



- Parallel wiring of 16 motors
- One power supply for 16 motors
- Motor connections with plug
- Exact positioning of motors
- Cycle counter implemented in motor
- Status information accessible for BMS systems

Control Solutions

Conventional



- Parallel wiring of up to 4 motors
- DCT Integration with 1-, 2- and 4-channel controls
- KNX Integration with 1- and 4-channel controls
- RS485 integration for combined BUS and DCT solutions

Control Solutions

SMI Controllers



- Parallel wiring of up to 16 motors
- Up to 16 switches for 16 motors
- Up to 64 motors on one KNX Gateway
- Online feedback on motor position
- Online feedback on motor temperature
- Parallel wiring of up to 16 motors
- Seamless KNX, LON, RS 485 integration

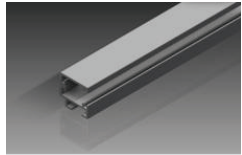
Specifications and product details are subject to change without prior notice.

Product Details

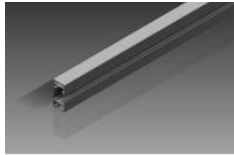
Slats:	flat slat; slat with flanging; Z slat; S slat
Widths:	60mm; 80mm; 100mm and 150mm (flat only)
Lateral guide:	rail; tension rope
Colours:	Slats according to the current colour chart. Custom colours available at an extra charge; panels and visible aluminium parts according to RAL or DB colour chart, powder coated.
Operation:	motor
Controls:	Automatic controls with sun and wind monitor possible

vasatec External Venetian Blinds are made of high-quality aluminium, textiles and lift tapes; weather and UV resistant.

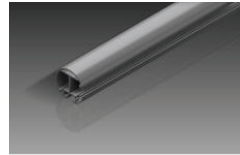
Guide Rail



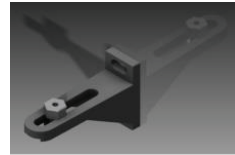
Standard guide rail



Guide rail boosted for elevated blinds

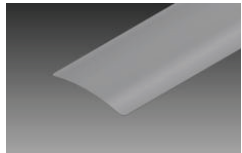


Round guide rail strengthened for elevated blinds

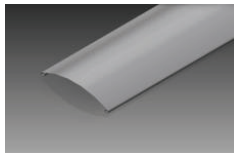


Clamping angle for cable guide

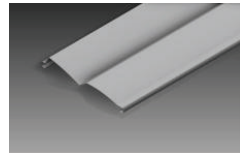
Slat Profiles



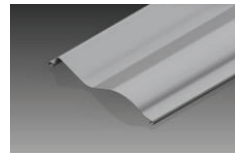
Flat Slat



Rolled Edge Slat



Z Shaped Slat



S Shaped Slat

Standard Slat Colors

White Aluminium RAL 9006	Gray Aluminium RAL 9007	Pure White RAL 9010	Traffic White RAL 9016	Beige
Dark Gray DB 703	Chrome Yellow	Powder Blue RAL 5014	Anthracite Grey RAL 7016	Light Grey RAL 7035
Dark Brown				

Standard colors at slat widths	9006	9007	9010	9016	DB 703	5014	7016	7035	Beige	Dark Brown	Chrome Yellow
60 flanged slat	x	x									
60 flat slat	x	x		x				x			
80 flanged slat	x	x	x	x	x	x	x	x	x	x	x
80 flat slat	x	x		x	x		x	x			
100 flat slat	x	x		x				x			
150 flat slat	x	x		x				x			

Product Information



vasatec-contractshading.com/external-venetian-blinds

vasatec External Venetian Blinds are made of high-quality aluminium, textiles and lift tapes; weather and UV resistant.

Specifications and product details are subject to change without prior notice.

Isolette® blinds paired with convenient control solutions are available for small, medium to large scale projects for standard and angled glazing applications.



Elegant facade design



Various slat sizes and colours



Small to medium projects



large scale projects

vasatec[®]
contract shading



Vasatec Solution Cards for more information on shading systems, control and integration options.

Systems

Automation

Motor & Connection

vasatec-contractshading.com/solutions



faltenbacher.de

Specifications and product details are subject to change without prior notice.