

ISOLETTE® Blind

+ Digital Drive & Digital Controller

- Excellent thermal properties
- Remains clean - dust free
- Stable - damage free
- Durable - commercial quality
- Excellent energy performance



ISOLETTE® is an insulated window with built-in Venetian blind, fitted within a hermetically sealed space between two glass panes. The unique system offers excellent solar control and energy performance properties all year round, reducing the impact of additional heating and cooling costs. Both standard systems and roof-systems for slanted glazing are available.

Motorised Control



ISOLETTE® blinds are controlled by raising, lowering and tilting the Venetian blind slats to allow as much or as little light as desired. Motorised blinds can be controlled at various levels of sophistication, from wall switch, remote control or BMS system integration. i.e. KNX, LON IoT connected blind control.

- KNX & BMS network integration
- Solar path timed control
- IoT digital motors
- Future proof software
- Fail Proof Installation

Digital Motor Features



- Parallel wiring LL-21 = 8 motors, (SMI = 16 motors)
- One motor for all automation systems
- Speed regulated motors for slow start/stop
- Applications up to 85°
- Cycle counter implemented in motor

Control Solutions

LL-21 Controller



- Parallel wiring of up to 8 motors
- LL-21 Controller with plugs
- LL-21 Controller housing flush mounted, boxed or on DIN-Rail
- Tilt-only function accessible via dip-switch
- Different angle accessible via potentiometer

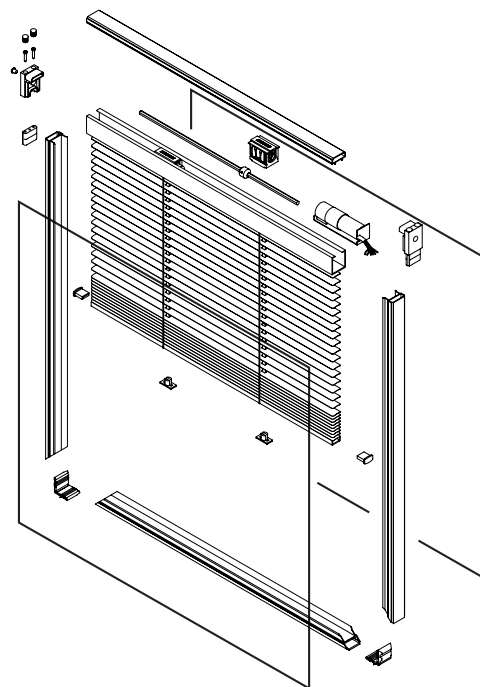
Control Solutions

SMI Controllers

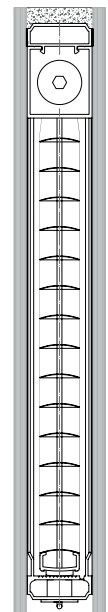


- Online feedback on motor position
- Online feedback on motor temperature
- Parallel wiring of up to 16 motors
- Seamless KNX, LON, RS 485 integration

Section

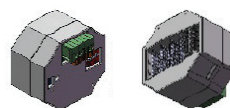


Side Profile



_X_27/32_X_

LL21 Controller



Product Details

| | |
|------------------------|------------------------------------------------------------|
| Product Name: | vasatec ISOLETTE® I-06 Mod. 1 (Encoder) / Mod. 4 (Tilting) |
| Shading System: | Venetian Blind Insulating Glass System |
| Motor: | Vestamatic LL21 LoVo 24VDC SMI |

Systems

| | |
|-----------------------|------------------------------------------------|
| I-06 Model 1: | Motor drive for lifting, lowering and turning |
| I-06 Model 4: | Motor drive for turning |
| I 06 Model KH: | Motor drive for turning - only for heights >3m |
| I DACH: | Motor drive for turning (horizontal glazing) |

Dimensions

Glass Space 27 mm

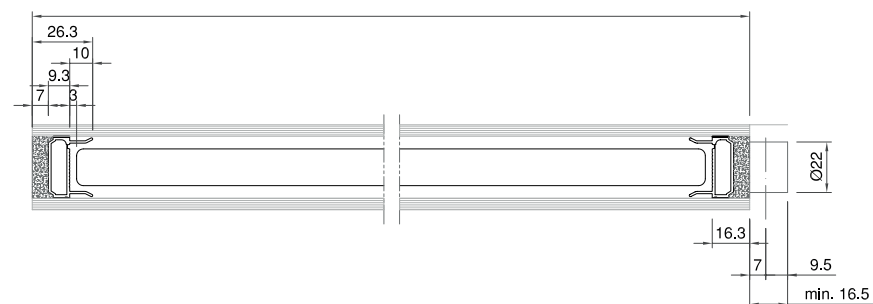
| | |
|--------------------|---------|
| Max Width: | 2600 mm |
| Max Height: | 2200 mm |
| Max Area: | 4.0 sqm |

Glass Space 32 mm





| | |
|--------------------|---------|
| Max Width: | 2600 mm |
| Max Height: | 3000 mm |
| Max Area: | 6.5 sqm |

Minimum glass thickness: Inside pane 6 mm Low-E / outside pane 6 mm tempered

Top Profile



Slat Colors

| | | | |
|---------------------------------------------------------------------------------------|---------------------------------------------------------------------------------------|---------------------------------------------------------------------------------------|---------------------------------------------------------------------------------------|
|  |  |  |  |
| Aluminum 16.035 | White RAL 9016 | Silver RAL 9006 | Bronze Grey RAL 7048 |

Product Information



vasatec-contractshading.com/isolette

Product Manuals



isolette.de/downloads

Isolette® blinds paired with convenient control solutions are available for small, medium to large scale projects for standard and angled glazing applications.



Standard System



Angled glazing System



Small to medium projects



large scale projects

vasatec[®]
contract shading



Vasatec Solution Cards for more information on shading systems, control and integration options.

Systems

Wiring

Automation

vasatec-contractshading.com/solutions

ISOLETTE[®]
The blind insulating glass.
Das Jalousienisoliervglas.

isolette.de